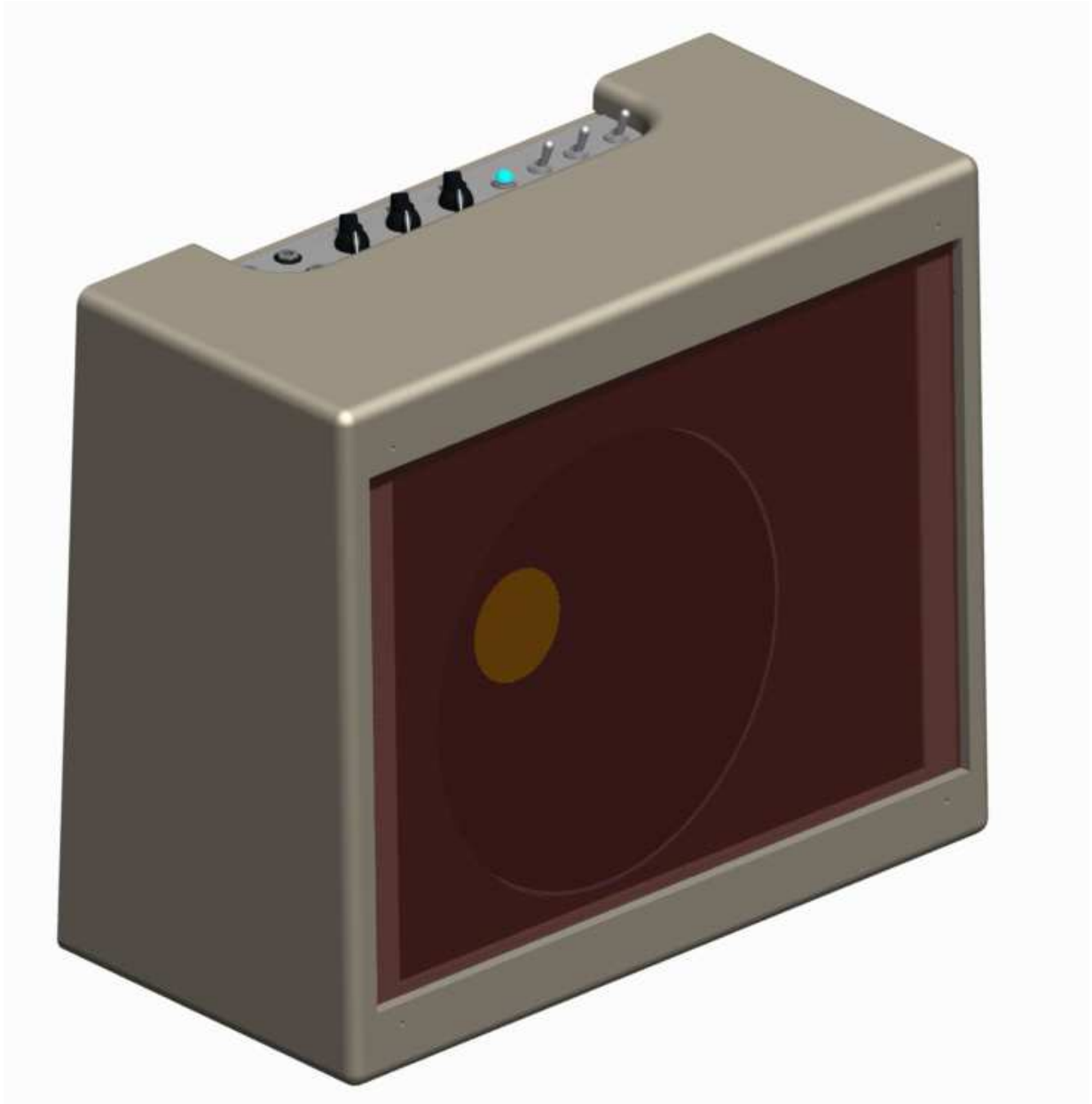


5E3 DELUXE STYLE CABINET PLANS

-REV 1.1-



MODULUS

Instructions:

These plans are for a 5E3 Fender Deluxe styled cabinet.

For wood you MUST use “void free” wood, Solid wood is preferable for authenticity, however high grade birch or mahogany ply or due to the recession MDF can be used... but it may leave the tone sounding cheap. .. no knotted pine cabs allowed!

If you choose to ignore this and use industrial/building grade ply you will experience a buzzy sound that would get you kicked out of most heavy metal bands... or at least drive you up the wall. .. Trust me I have been up and down the wall several times.

Dimensions have been (mostly) shown in millimetres and inches, Normally I find cabs built with the millimetres dimensions are clearer and less confusing. But I think that has to do with my metric approach to tonality. For truly authentic tone use the Inch dimensions.

The main cabinet body is shown with the option of building it with butt joints or ½” finger joints, again finger joints will give you that authentic tone, but butt joints may be easier for the average pleb

For the butt joint option there are no screws/dowels/corner braces shown. The builder should consider these options with the view to adding strength to the joints. Wood dowels can easily be drilled and inserted , screws could be used.. some manufactures have been found to use finishing nails... importantly make sure you have good clamps for holding the cab while gluing.

Check the dimensions of your chassis to ensure it will fit within the area allowed.

If you plan on leaving the cab in natural finish (no tolex/tweed covering) you will have to adjust some sizes to suit.

REMEMBER: Think before you cut, and don't drink before you cut as you may loose a finger or two.

I will not be held responsibly for loss of limbs cause by cheap/faulty equipment or the wrong use of cheap/faulty equipment. ...and don't kill yourself.

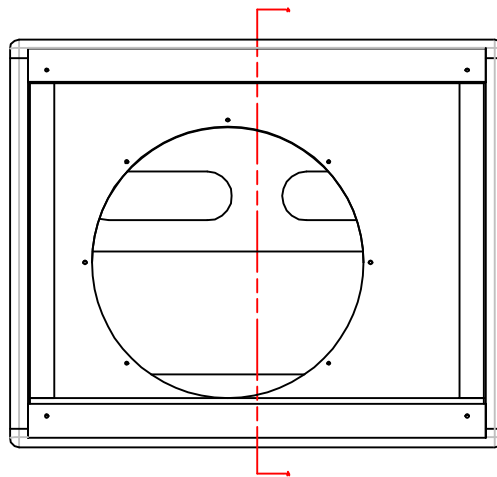
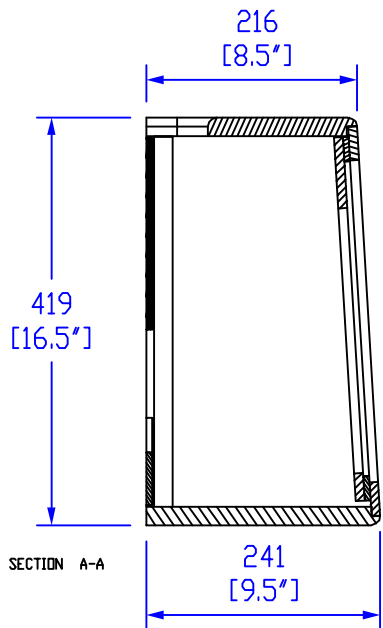
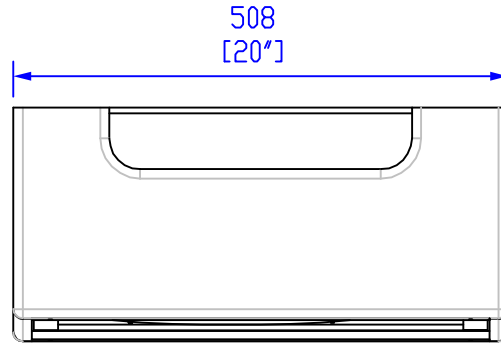
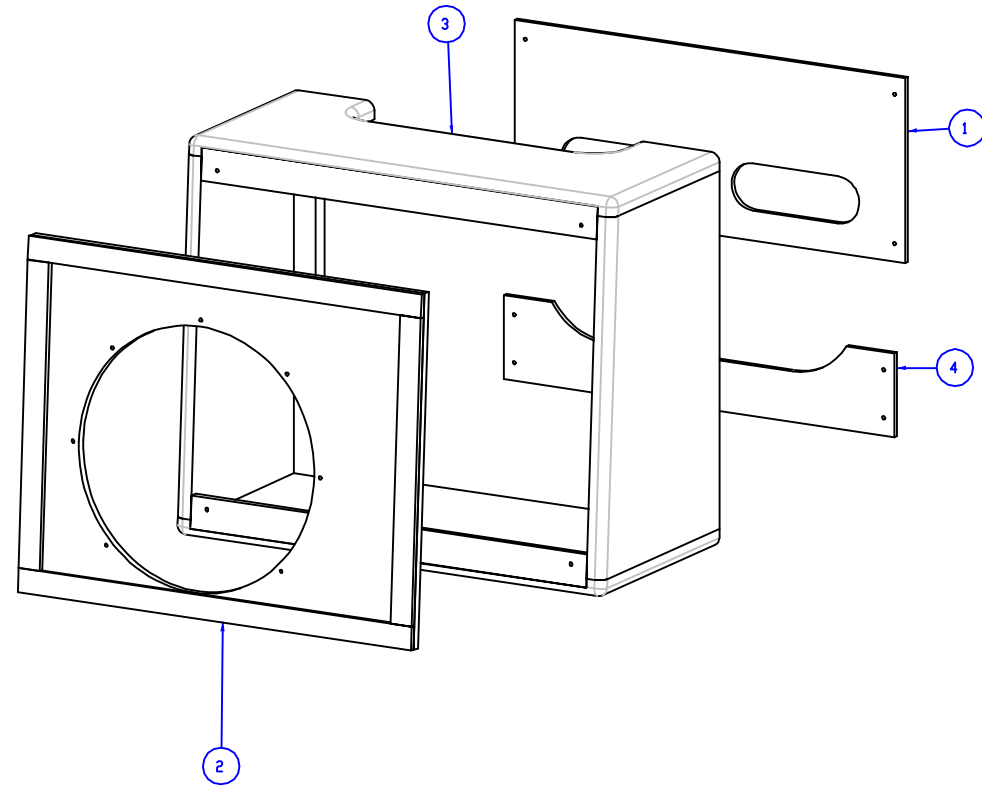
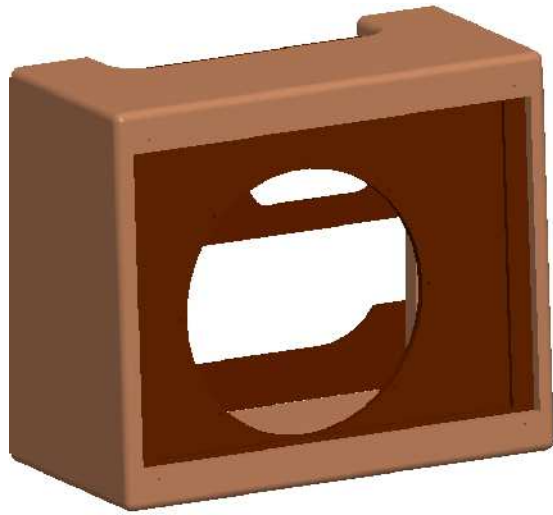
This Document is the copyright of MODULUS Amplification. Please don't copy it wrong without my expressed permission.

Any Questions or queries or corrections can be mailed to me at modulus-amp@uwclub.net.

Cheers

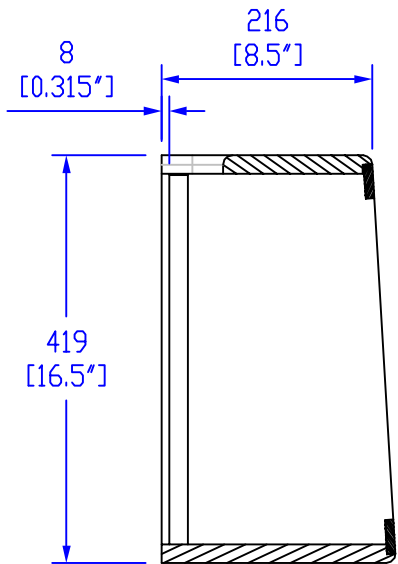
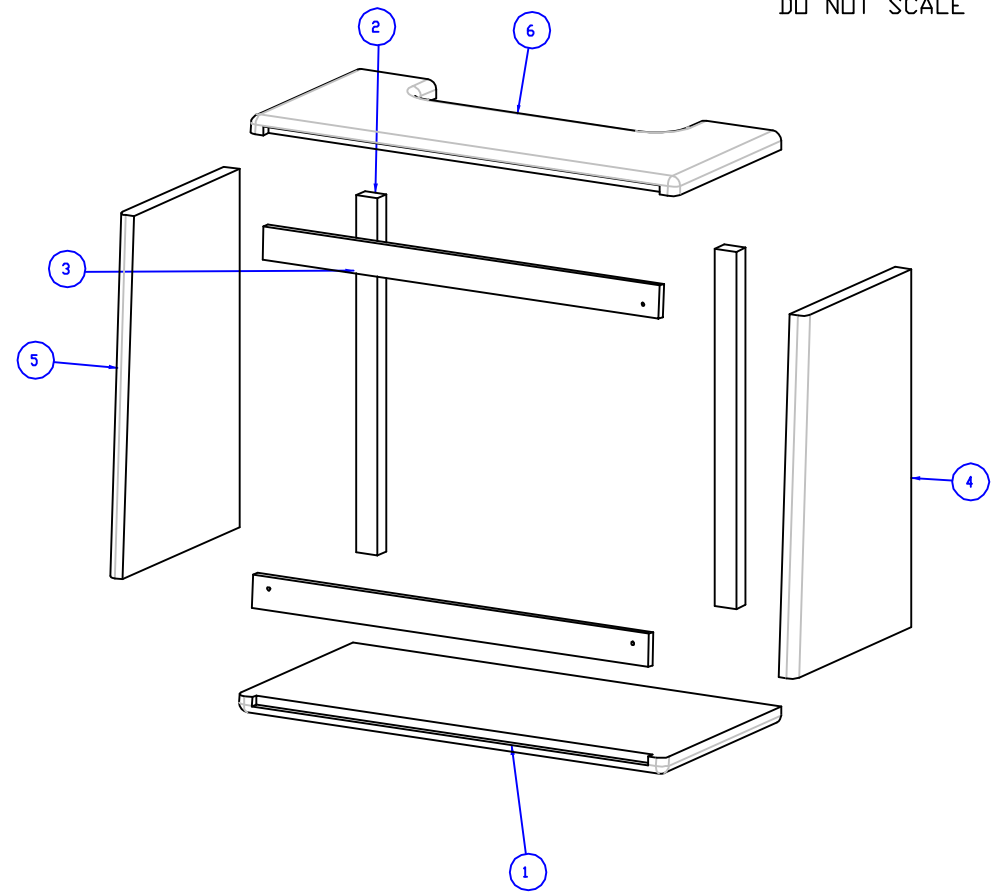
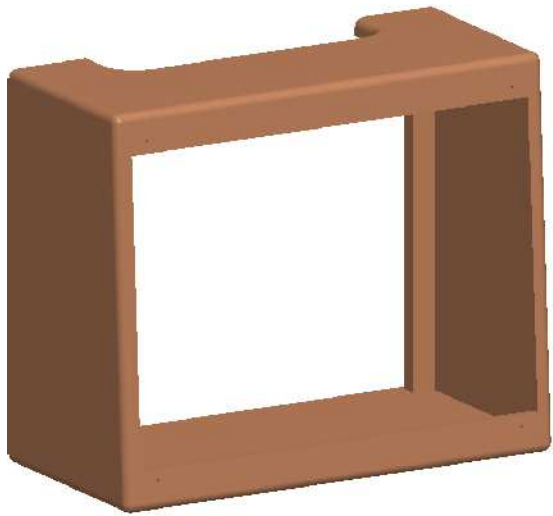
Mike

DO NOT SCALE

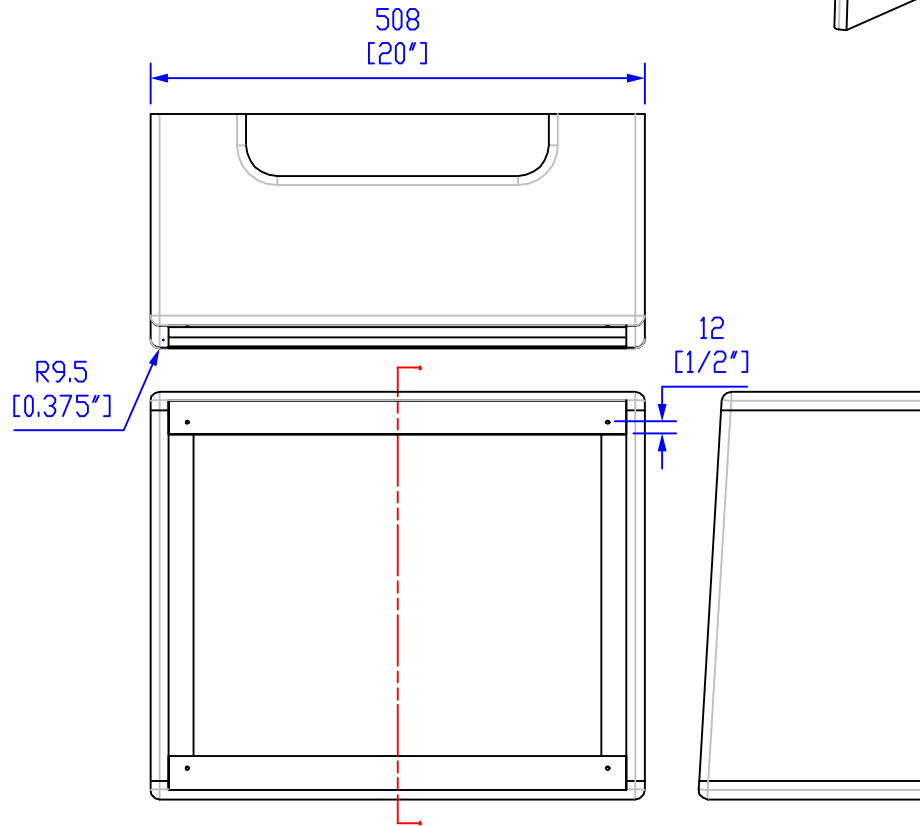


ITEM	PART NO.	QTY
1	5E3-BACKPANEL1	1
2	5E3-BAFFLE-ASSY1	1
3	5E3-CABINET	1
4	5E3-LOWERPANEL 1	1

		3rd ANGLE PROJ 	THIS DRAWING IS THE PROPERTY OF MODULUS AMPLIFICATION AND MUST NOT BE REPRODUCED OR LOANED WITHOUT WRITTEN PERMISSION	
TITLE CAB ASSEMBLY 5E3 DIY CABINET		DRAWN BY - M.MORTIMER DATE - 09/12/08		ISSUE:
MATERIAL SEE DETAILS		5E3-1		01X

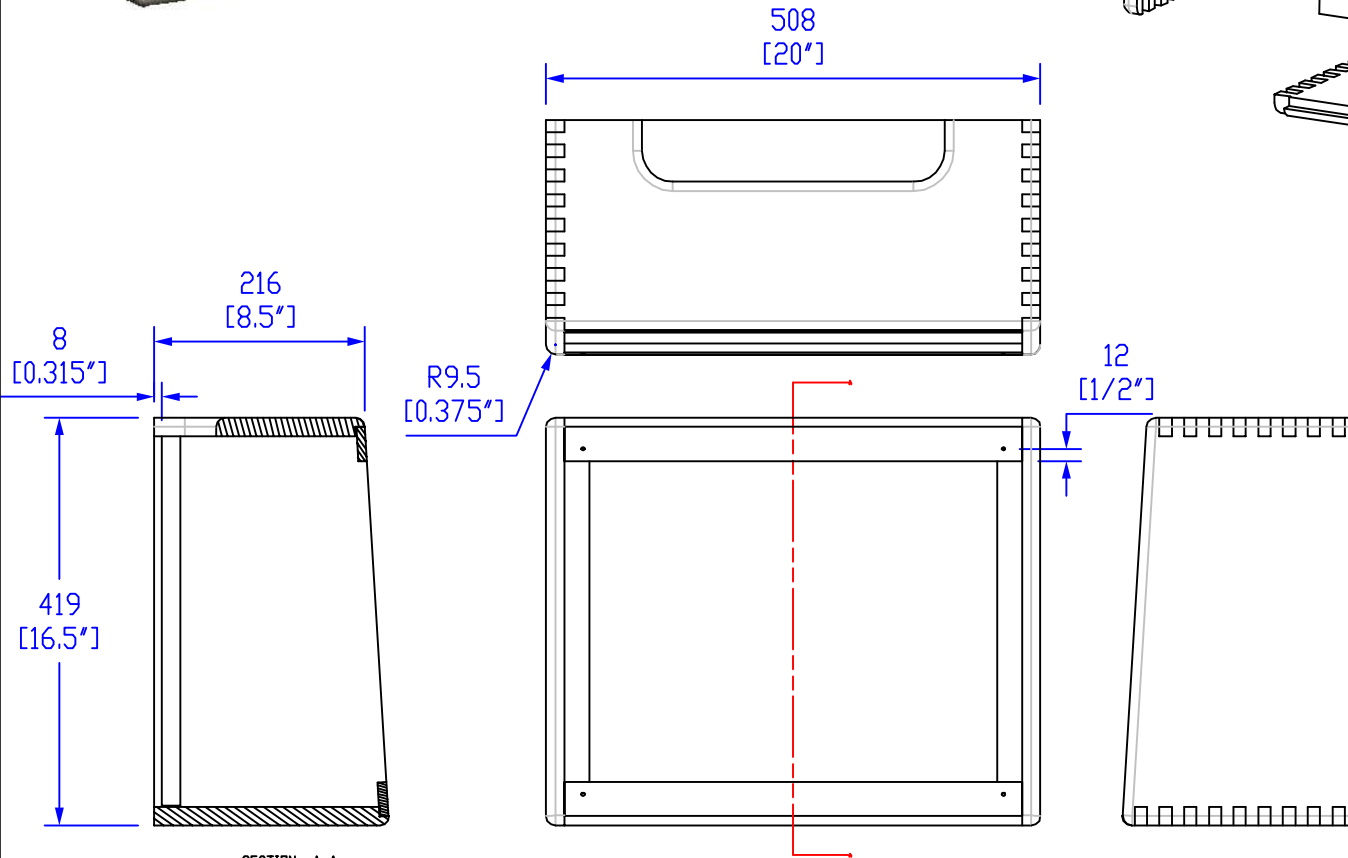
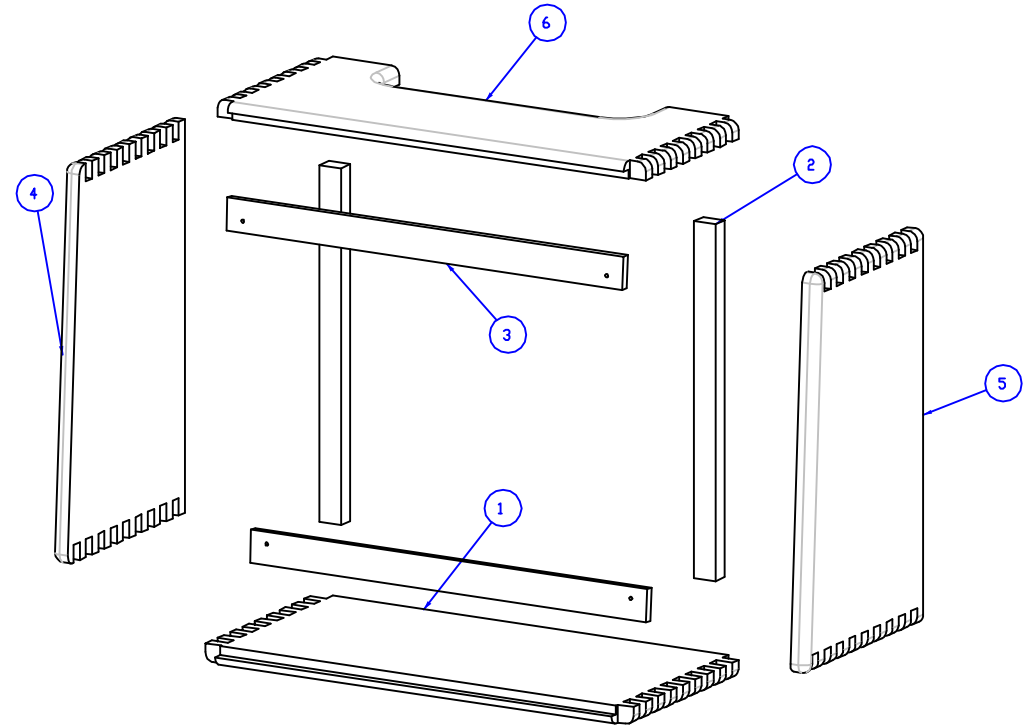
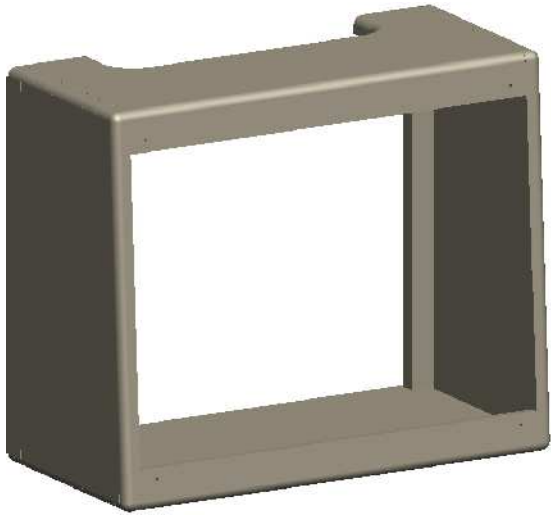


SECTION A-A



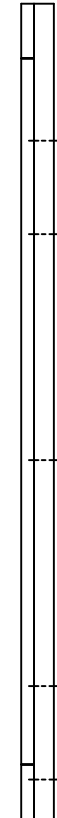
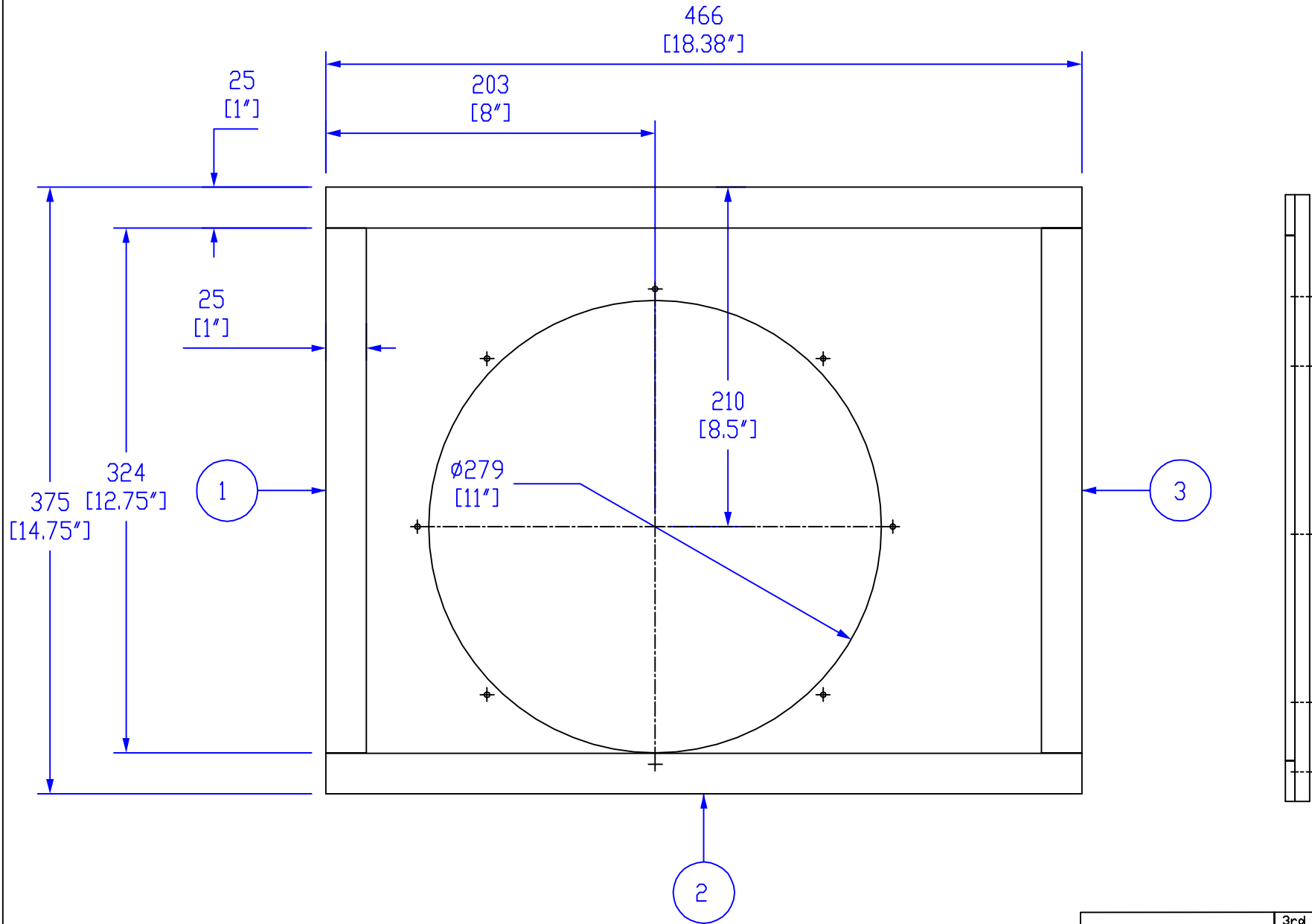
ITEM	PART NO.	QTY
1	BOTTOM	1
2	CLEAT	2
3	FACIA-BOARD	2
4	SIDEPANEL	1
5	SIDEPANEL	1
6	TOP	1

3rd ANGLE PROJ 		THIS DRAWING IS THE PROPERTY OF MODULUS AMPLIFICATION AND MUST NOT BE REPRODUCED OR LOANED WITHOUT WRITTEN PERMISSION	
		TITLE BUTT JOINT BOX ASSEMBLY 5E3 DIY CABINET	DRAWN BY - M.MORTIMER DATE - 09/12/08
MATERIAL SEE DETAILS		DRAWING No. 5E3-2	ISSUE: 01X



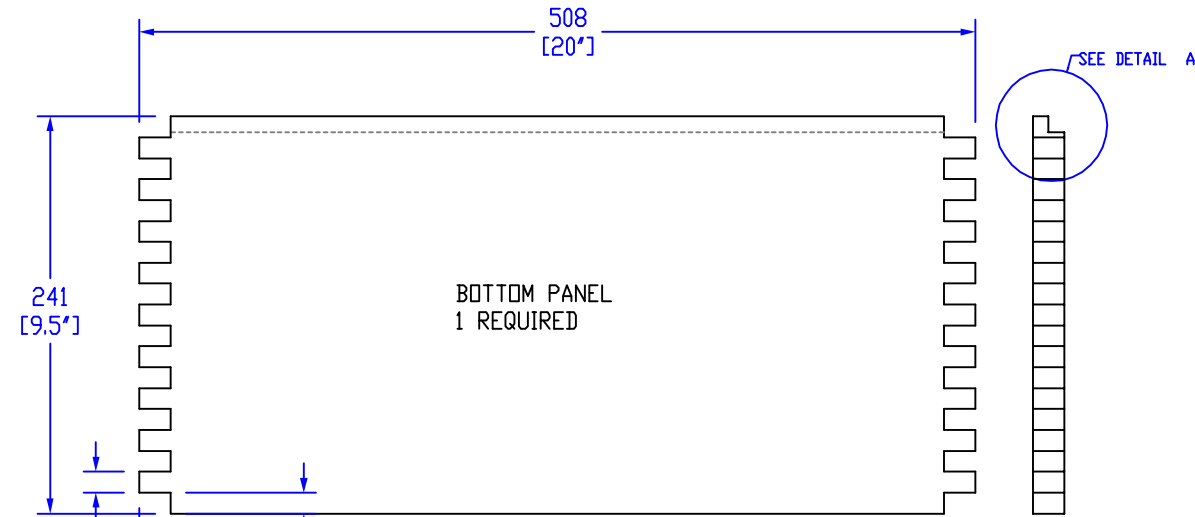
ITEM	PART NO.	QTY
1	BOTTOM-FINGER	1
2	CLEAT	2
3	FACIA-BOARD	2
4	SIDE-FINGER	1
5	SIDE-FINGER	1
6	TOP-FINGER	1

3rd ANGLE PROJ 		THIS DRAWING IS THE PROPERTY OF MODULUS AMPLIFICATION AND MUST NOT BE REPRODUCED OR LOANED WITHOUT WRITTEN PERMISSION	
		TITLE FINGER BOX ASSEMBLY 5E3 DIY CABINET	
MATERIAL SEE DETAILS		DRAWN BY - M.MORTIMER DATE - 09/12/08	DRAWING No. 5E3-3 ISSUE: 01X



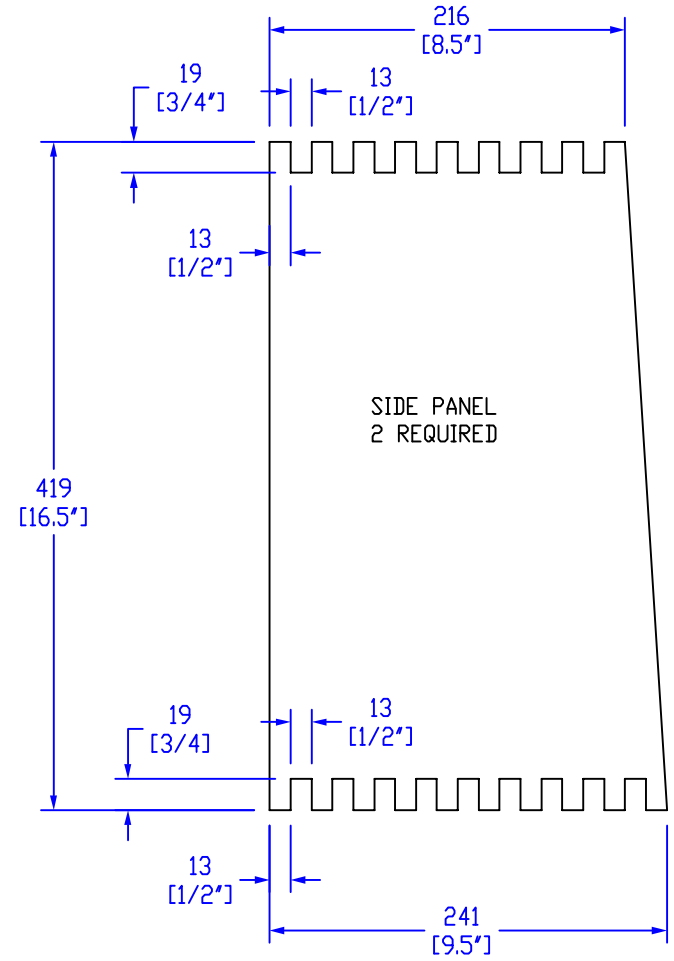
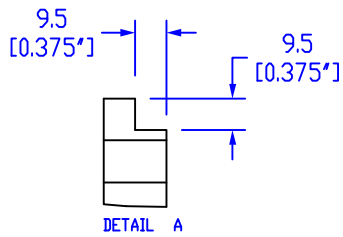
ITEM	PART NO.	QTY
1	BAFFLE-BOARD	1
2	BAFFLESTRIP1	2
3	BAFFLESTRIP2	2

		3rd ANGLE PROJ 	THIS DRAWING IS THE PROPERTY OF MODULUS AMPLIFICATION AND MUST NOT BE REPRODUCED OR LOANED WITHOUT WRITTEN PERMISSION	
TITLE BAFFLE BOARD ASSEMBLY 5E3 DIY CABINET		DRAWN BY - M.MORTIMER DATE - 09/12/08		DRAWING No.
MATERIAL SEE DETAILS		5E3-4		ISSUE: 01X

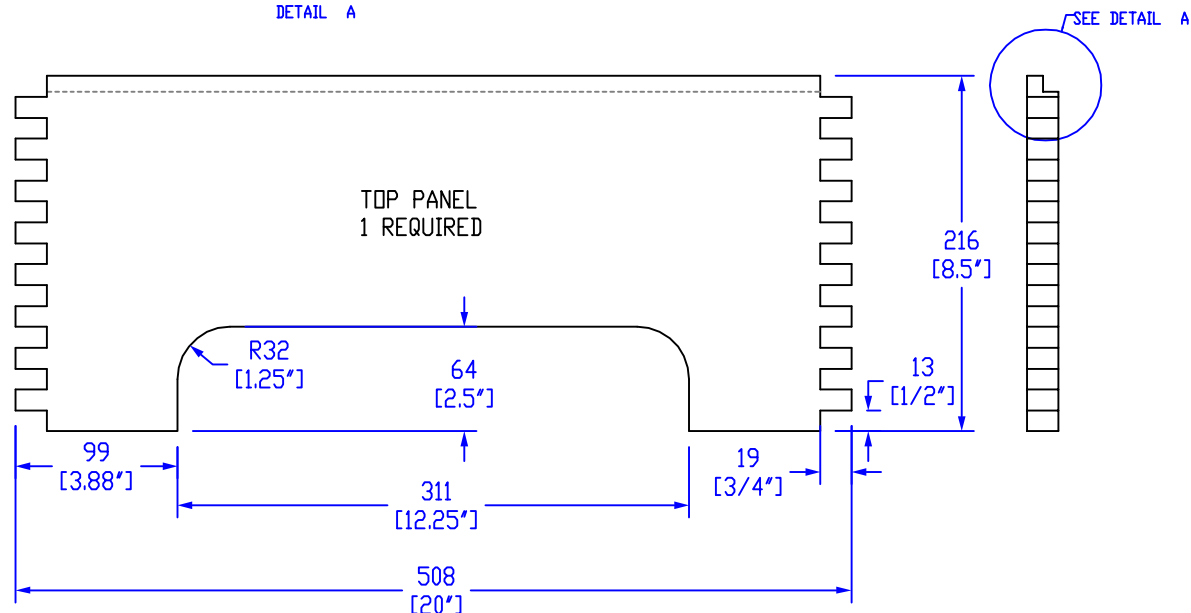


BOTTOM PANEL
1 REQUIRED

1/2" FINGER JOINTS - USE A ROUTER GUIDE OR DO IT SLOWLY THE OLD FASHIONED WAY.
SEE 5E3-6 FOR THE EASIER 'BUTT JOINT' OPTION

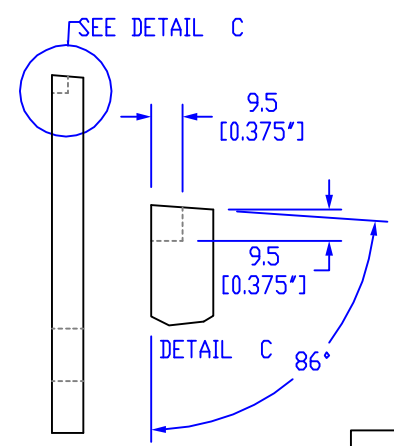
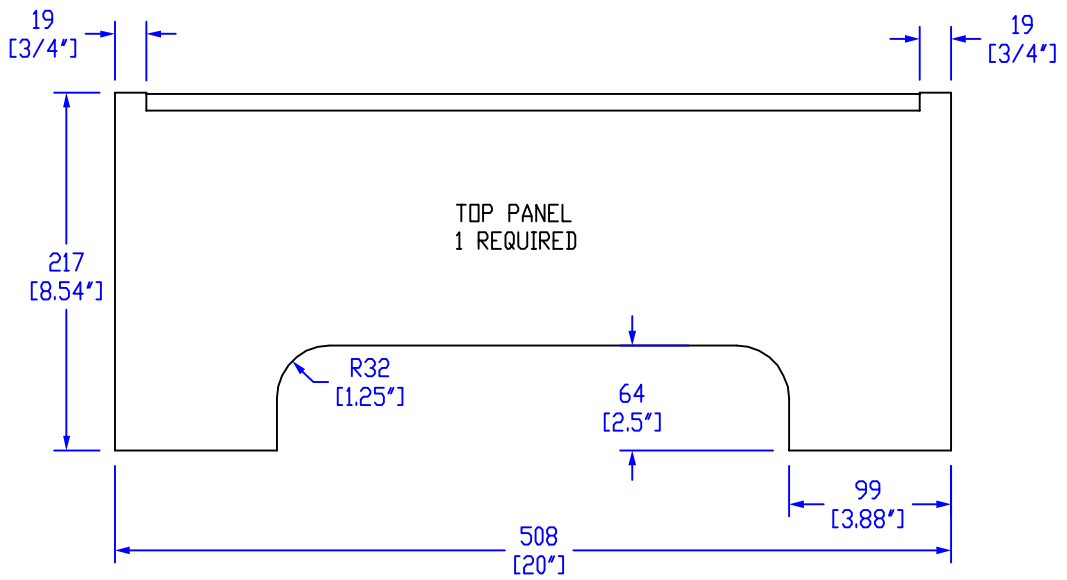
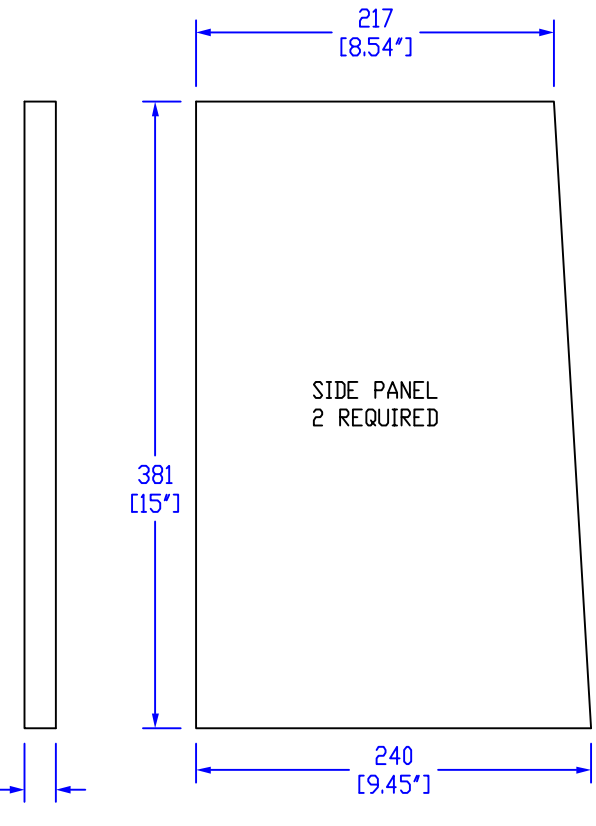
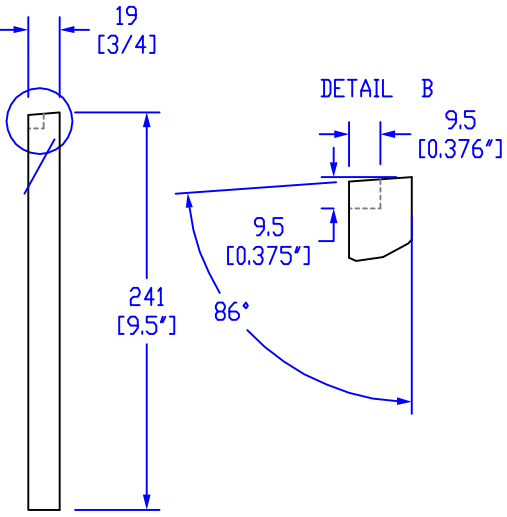
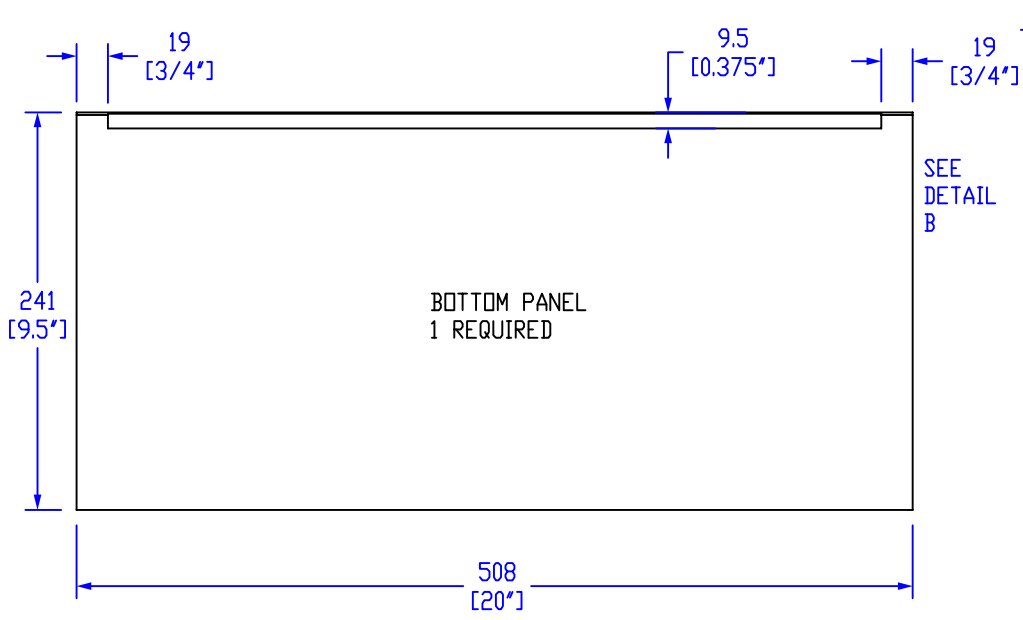


SIDE PANEL
2 REQUIRED



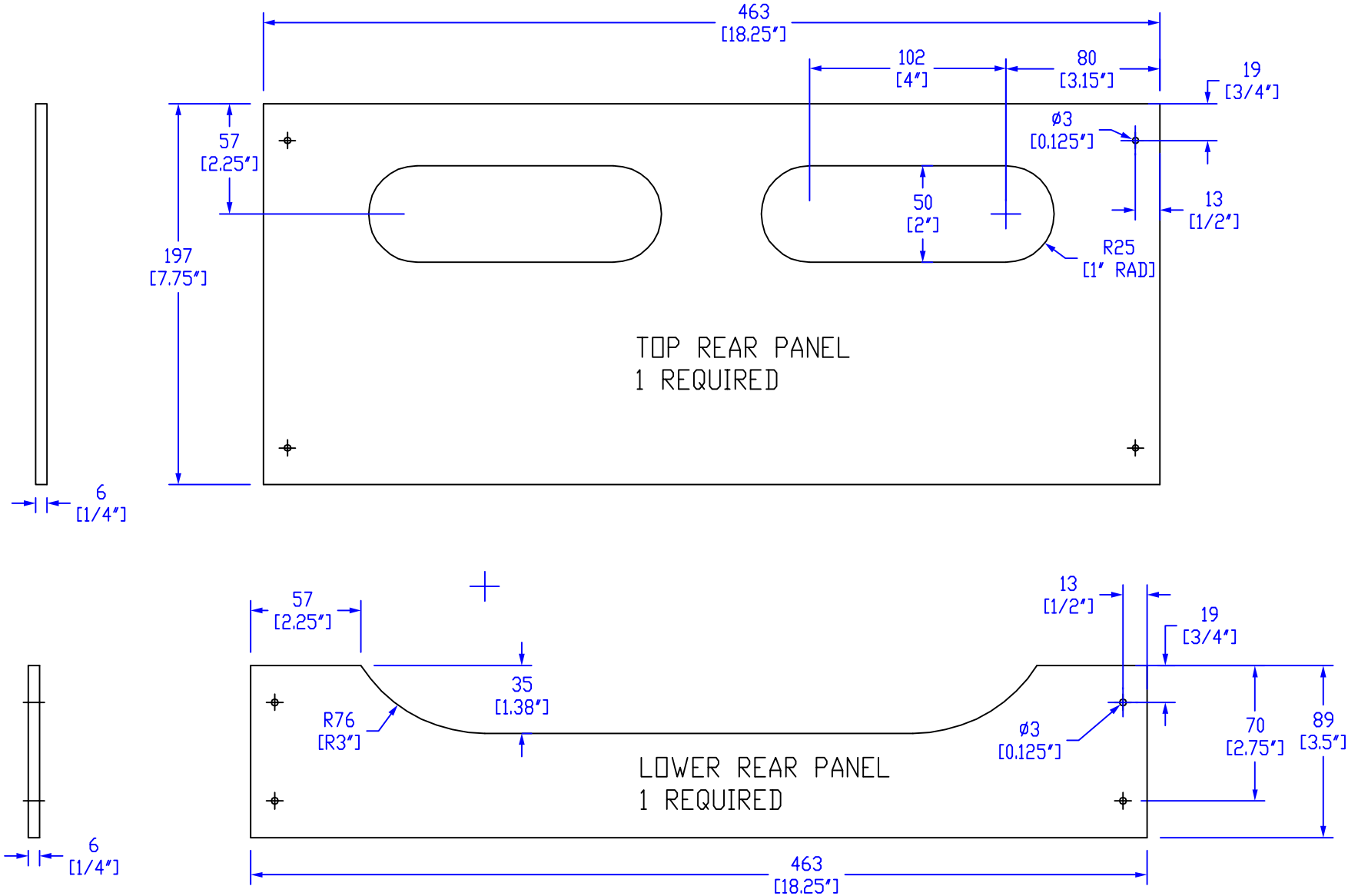
TOP PANEL
1 REQUIRED

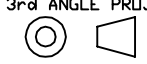
		3rd ANGLE PROJ ⊙ ◁	THIS DRAWING IS THE PROPERTY OF MODULUS AMPLIFICATION AND MUST NOT BE REPRODUCED OR LOANED WITHOUT WRITTEN PERMISSION	
TITLE FINGER JOINT PANELS 5E3 DIY CABINET		DRAWN BY - M.MORTIMER DATE - 09/12/08		ISSUE:
MATERIAL 3/4" OR 19MM "VOID FREE" PINE/PLY		DRAWING No. 5E3-5		01X

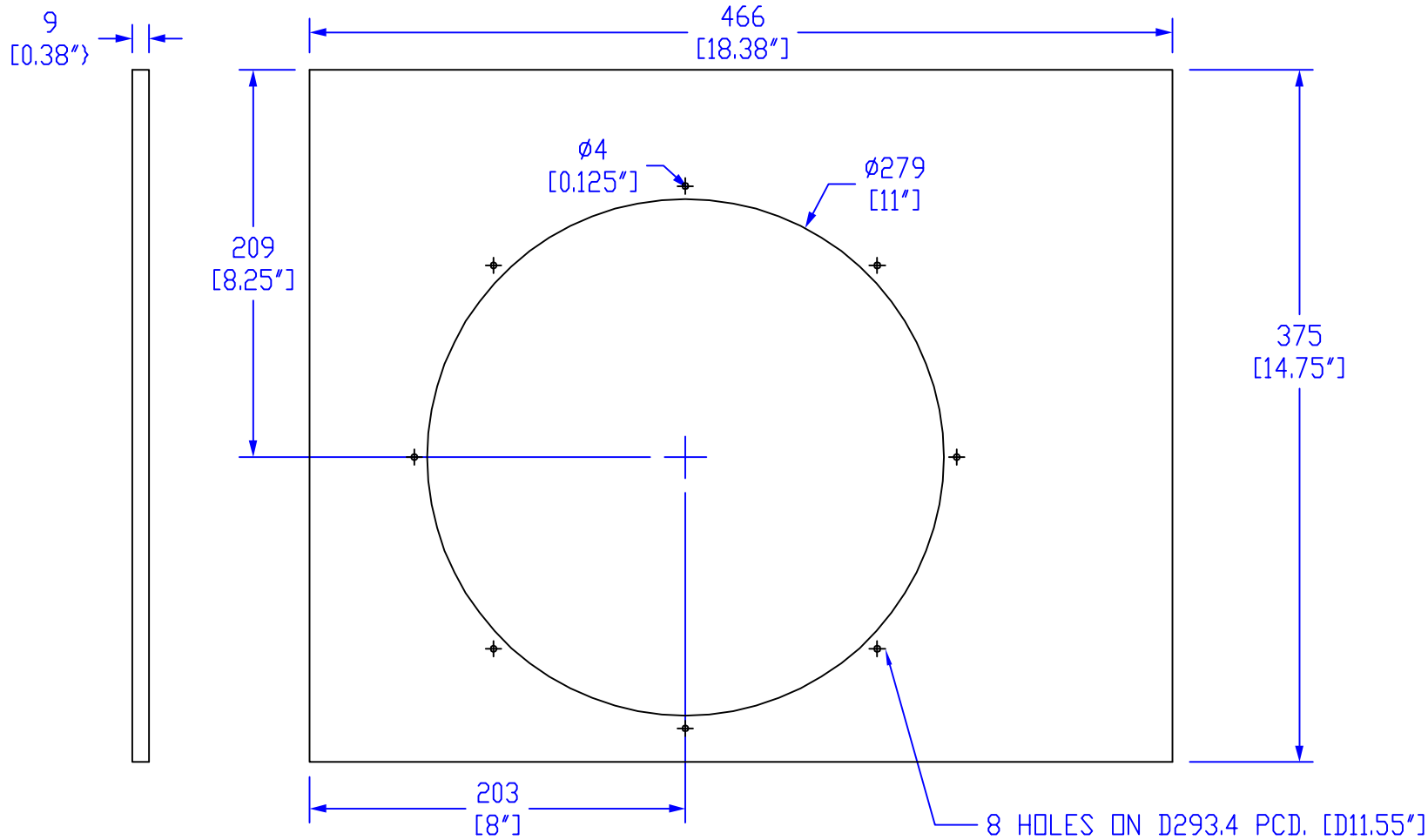


EASY OPTION BUTT JOINT CABINET - MUST BE ABLE TO CUT THE TOP AND BOTTOM AT A 4° ANGLE AND ROUTER OUT GROOVE FOR FRONT FACIA PANEL

		3rd ANGLE PROJ ⊙ ◁	THIS DRAWING IS THE PROPERTY OF MODULUS AMPLIFICATION AND MUST NOT BE REPRODUCED OR LOANED WITHOUT WRITTEN PERMISSION	
TITLE		BUTT JOINT PANELS 5E3 DIY CABINET		DRAWN BY - M.MORTIMER DATE - 09/12/08
MATERIAL		3/4" OR 19MM "VOID FREE" PINE/PLY		DRAWING No. 5E3-6 ISSUE 01X

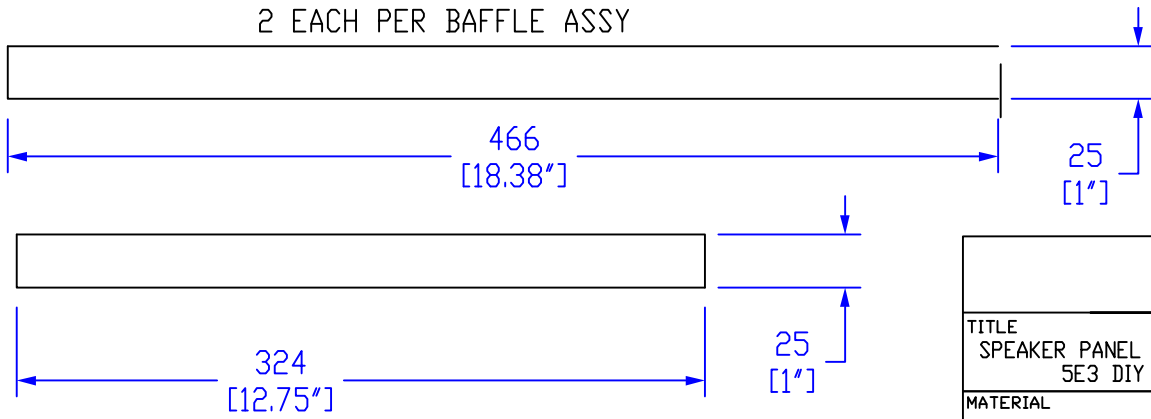
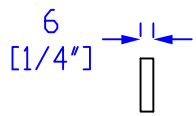
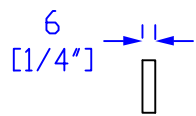


		3rd ANGLE PROJ 	THIS DRAWING IS THE PROPERTY OF MODULUS AMPLIFICATION AND MUST NOT BE REPRODUCED OR LOANED WITHOUT WRITTEN PERMISSION	
TITLE REAR PANELS 5E3 DIY CABINET		DRAWN BY - M.MORTIMER DATE - 09/12/08		
MATERIAL 1/4" OR 6MM 'VOID FREE' PINE/PLY		DRAWING No. 5E3-7	ISSUE: 01X	

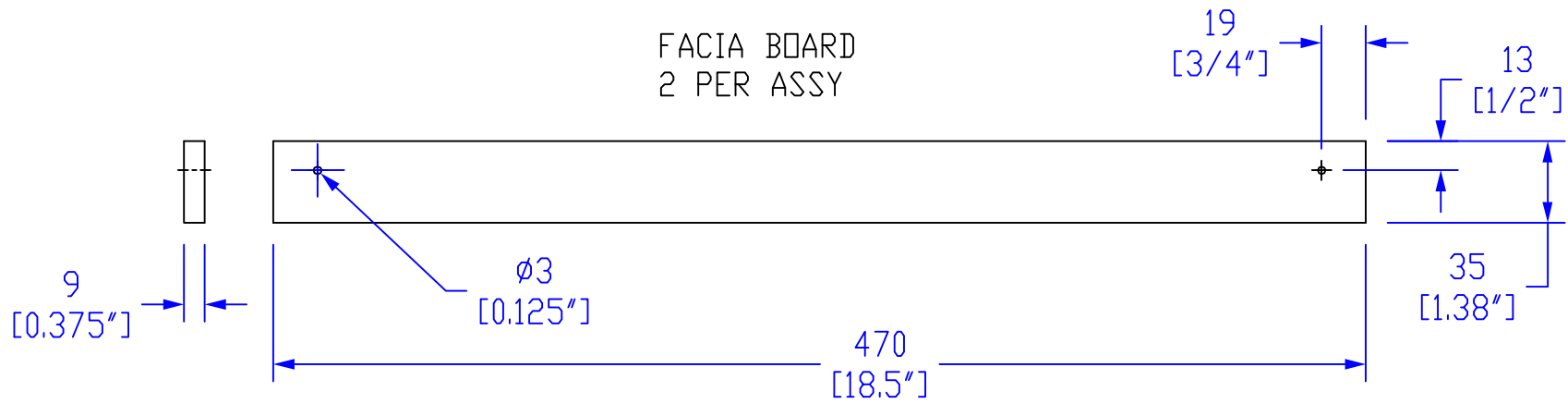
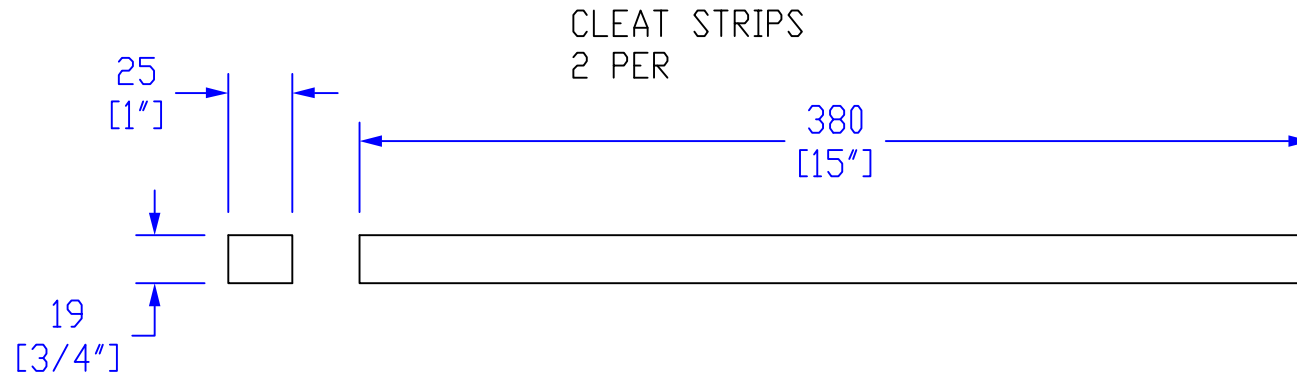


8 HOLES ON D293.4 PCD. [D11.55"]

BAFFLE STRIPS
2 EACH PER BAFFLE ASSY



		3rd ANGLE PROJ 	THIS DRAWING IS THE PROPERTY OF MODULUS AMPLIFICATION AND MUST NOT BE REPRODUCED OR LOANED WITHOUT WRITTEN PERMISSION	
TITLE SPEAKER PANEL AND BAFFLE STRIPS 5E3 DIY CABINET		DRAWN BY - M.MORTIMER DATE - 09/12/08		
MATERIAL 'VOID FREE' PINE/PLY - SEE DETAILS		DRAWING No. 5E3-8	ISSUE: 01X	



		3rd ANGLE PROJ 	THIS DRAWING IS THE PROPERTY OF MODULUS AMPLIFICATION AND MUST NOT BE REPRODUCED OR LOANED WITHOUT WRITTEN PERMISSION	
TITLE FACIA PANEL AND REAR CLEAT 5E3 DIY CABINET		DRAWN BY - M.MORTIMER DATE - 09/12/08		DRAWING No.
MATERIAL "VOID FREE" PINE/PLY - SEE DETAILS		5E3-9		ISSUE: 01X